

### L profile

W x H x e (mm)	Ø perforations (mm)	Perforation centres (mm)	Material	Profiles length (m)	To be ordered in multiples of	Reference
30 x 30 x 2.5	8.2	25	Steel z-b <sup>(1)</sup>	2	10 m	5254 6401
30 x 50 x 2.5	8.2	25	Steel z-b <sup>(1)</sup>	2	10 m	5254 6501
30 x 30 x 2.5	8.5 x 45	55	Steel z-b <sup>(1)</sup>	2	10 m	5000 0003
40 x 40 x 2.5	8.5 x 45	55	Steel z-b <sup>(1)</sup>	2	10 m	5000 0004

(1) White zinc-coated.

### U profile

W x H x e (mm)	Ø perforations (mm)	Perforation centres (mm)	Material	Profiles length (m)	To be ordered in multiples of	Reference
50 x 30 x 2.5	8.2	25	Steel z-b <sup>(1)</sup>	2	10 m	5254 6701
30 x 20 x 3	9	25	Aluminium	3	3 m	5254 6901

(1) White zinc-coated.

### Z profile

W x H x e (mm)	Ø perforations (mm)	Perforation centres (mm)	Material	Profiles length (m)	To be ordered in multiples of	Reference
30 x 30 x 2.5	8.2	25	Steel z-b <sup>(1)</sup>	2	10 m	5254 6601

(1) White zinc-coated.

### Rising U

W x H x e (mm)	Ø perforations (mm)	Perforation centres (mm)	Material	Profiles length (m)	To be ordered in multiples of	Reference
30 x 50 x 2.5	8.2 x 45	55	Steel z-b <sup>(1)</sup>	2	8 m	5000 0005

(1) White zinc-coated.

## Accessories

### Bracket

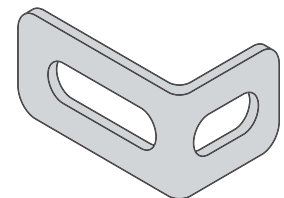
#### Use

For steel profile.

#### Characteristics

Bichromate zinc-coated steel.

H x W x D (mm)	Number of holes	Ø hole (mm)	Insert M	To be ordered in multiples of	Reference
25 x 25 x 19	2	7		25	5000 0045
25 x 25 x 19	1	6	M6	25	5000 0046
36 x 36 x 23	2	8		25	5000 0047
45 x 60 x 25	2	9x25 / 9x35		25	5254 6101
44 x 75 x 32	5	5 / 6		1 (Set of 6)	5119 5045



elcha\_001\_a\_1\_x\_cat

### Screws

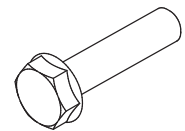
#### Use

For steel profile.

#### Characteristics

Bichromate zinc-coated steel.  
Integrated washer

Thread	L (m)	Class	To be ordered in multiples of	Reference
M6	10	8.8	100	5000 0066
M8	12	8.8	100	5000 0068
M8	16	8.8	100	5000 0069



elcha\_038\_a\_1\_x\_cat

### Washer

#### Use

For steel profile.

#### Characteristics

Bichromate zinc-coated steel.

Ø x e (mm)	Ø hole (mm)	To be ordered in multiples of	Reference
16 x 1.5	6.5	100	5000 0015
19 x 1.5	6.5	100	5000 0018
22 x 1.5	8.5	100	5000 0016



amc\_035\_a\_1\_x\_cat

### PVC border

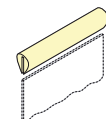
#### Use

PVC border for sheet metal.

#### Characteristics

Colour: Light grey

Steel thickness (mm)	To be ordered in multiples of	Reference
2	25 m	7739 0025



amc\_036\_a\_1\_x\_cat